

SOUTH AFRICAN

# GARDEN AND HOME

**DECORATING  
WITH WHITE**  
irresistibly chic looks

**REINVENT YOUR HOME**  
inspiration from  
3 renovated houses

## REFRESH YOUR PATIO

- The latest crockery
- Stylish furniture
- Pretty table settings
- Spring baskets



SEPTEMBER 2009

(Incl. VAT)  
countries  
(Excl. Tax)



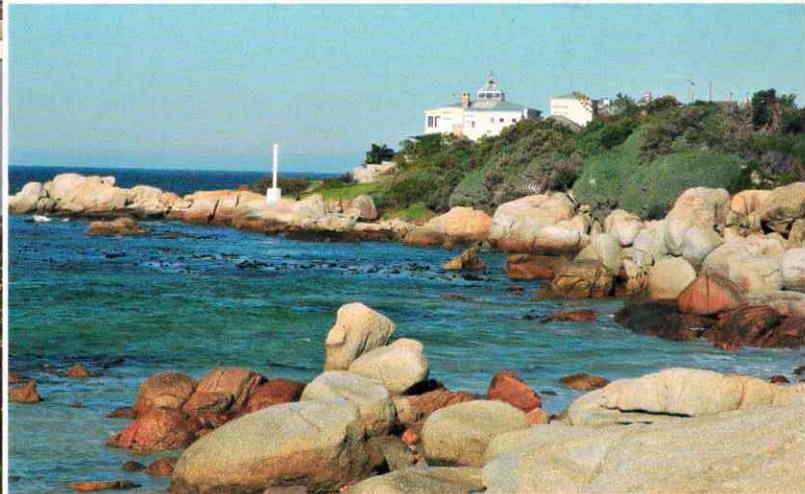
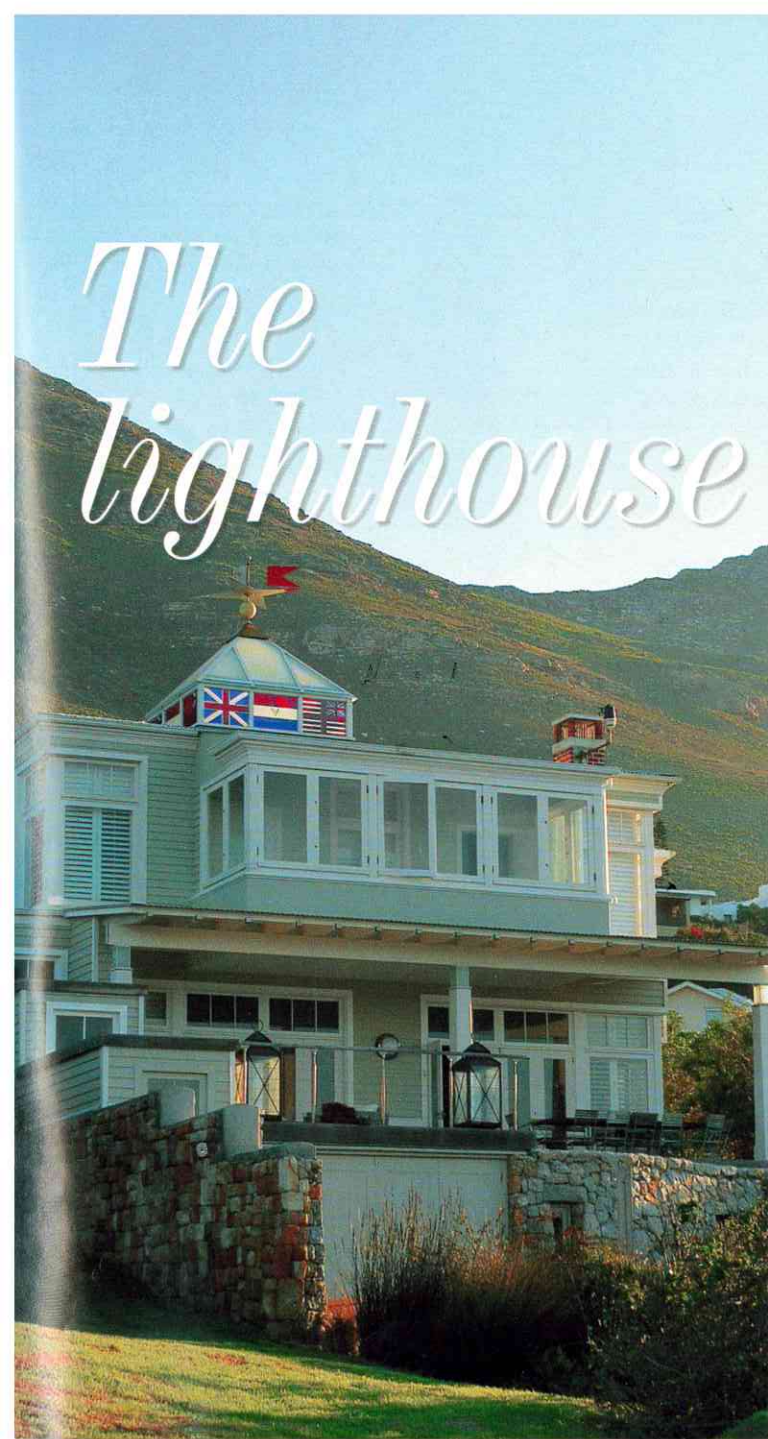
**WIN!  
BRAAIS  
WORTH  
R40 000**

## DIVINE SPRING GARDENING

grow tasty tomatoes • Choose the right lawn • Spring perennials

# The lighthouse

ARCHITECT'S PLAN



Built to last, this classic design pays homage to its historic coastal surrounds with subtle nautical details

TEXT AND PHOTOGRAPHS DIANA WEMYSS

**T**hey say you should never act with animals and children: too easy to be upstaged. So how does an architect compete with the mighty splendour of the Cape coastline and a view that stretches for hundreds of kilometres? If you're architect Wynand Wilsenach you create a quality home that doesn't stridently try to outdo with outrageous gestures, but one that holds its own in an equally beautiful way, acknowledging the

location and that will also stand up to a viciously harsh environment.

Aesthetics are all very well, but a sea view comes with gale force winds in both the summer and winter. Wynand took his cue from the sturdy teak-clad buildings built for WWII veterans in the area and he used board cladding made from an inert fibrous cement product to protect the house from the elements.

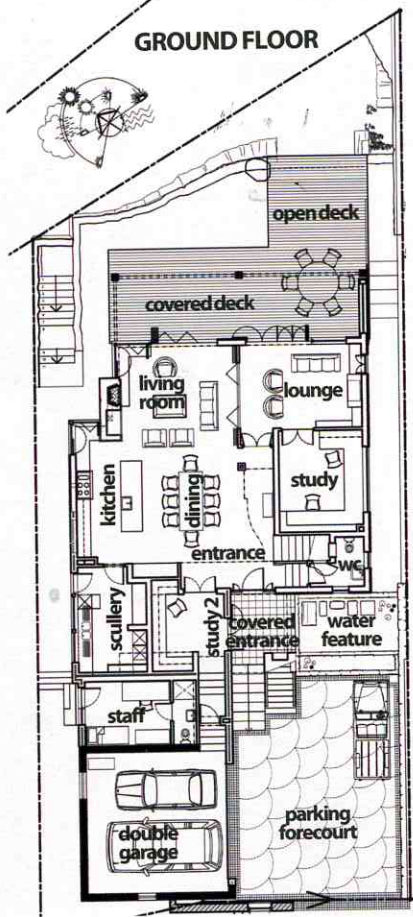
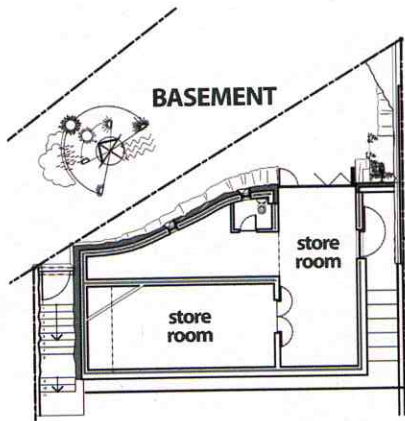
Although aluminium windows might have been the perfect solution against the elements, they would not

have looked right.

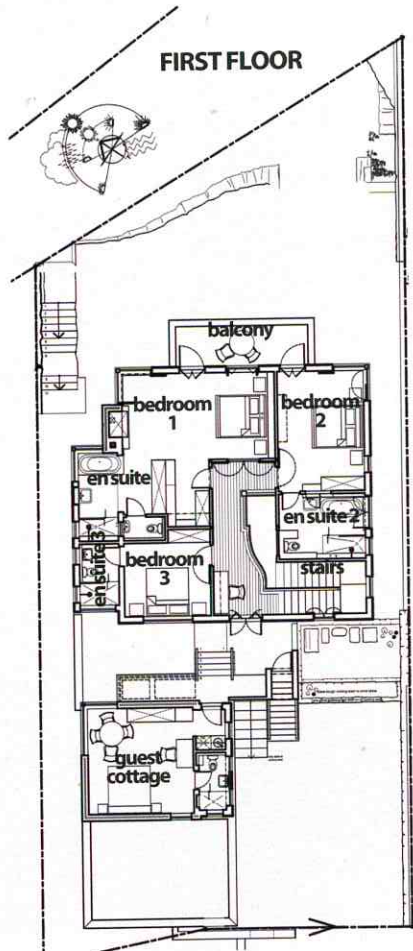
Instead timber frame windows were used but with extra sealers and rubber gaskets to protect against leakage and shrinkage. Woodwork is Wynand's particular forte; doors and windows are designed and meticulously detailed in accordance with the unique character of every home.

The three-bedroom, three-bathroom house with studio cottage was built ▷





**ON THE WEB**  LOVE THIS DESIGN? Then visit [www.gardenandhome.co.za](http://www.gardenandhome.co.za) and click on "Architect's plan" to download the full plan.



**SOURCE**  
**Wynand Wilsenach Architects**  
 021 424 3230, [architects@w2.co.za](mailto:architects@w2.co.za)  
 or [www.w2.co.za](http://www.w2.co.za)

for a semi-retired couple who Wynand says have enormous energy and love for life. "They are playful, not serious and they love company. They can sit on their deck and enjoy the view or launch a kayak or dive off the rocks at the bottom of the garden."

They also gave Wynand the opportunity to use all manner of clever architectural references that link the house to a nearby historic naval town. "We created a home with a nautical theme, a little lighthouse if you will," he explains. Not an obvious 'lighthouse' but a subtle interpretation.

The posts on the *stoep*, for instance,

have lights at the top under the roof to give the look of miniature lighthouses; the stained glass windows in the turret depict the flags of the navies that at one time or another controlled South Africa: the Dutch East India Company, the British, the Republic and now the new South Africa. There are round porthole windows and round porthole-style plaster decorations on the exterior and the showers are not tiled, but rendered with a mix of white plaster and crushed shells.

Every project he and his team of five architects undertakes is meticulously crafted. "We draw and rethink and

draw again," says Wynand. "People might believe that it comes quickly, but really everything is worked through incredibly thoroughly and changed again and again to make it better, to make it perfectly liveable so that each house is uniquely crafted."

"If you don't go for fashion and you build with good quality materials, and use good craftsmen, you won't think your home is tired after a few years and want to rip everything out and redo it all. We believe in designing and building homes that wear well and will only be enhanced with age." 